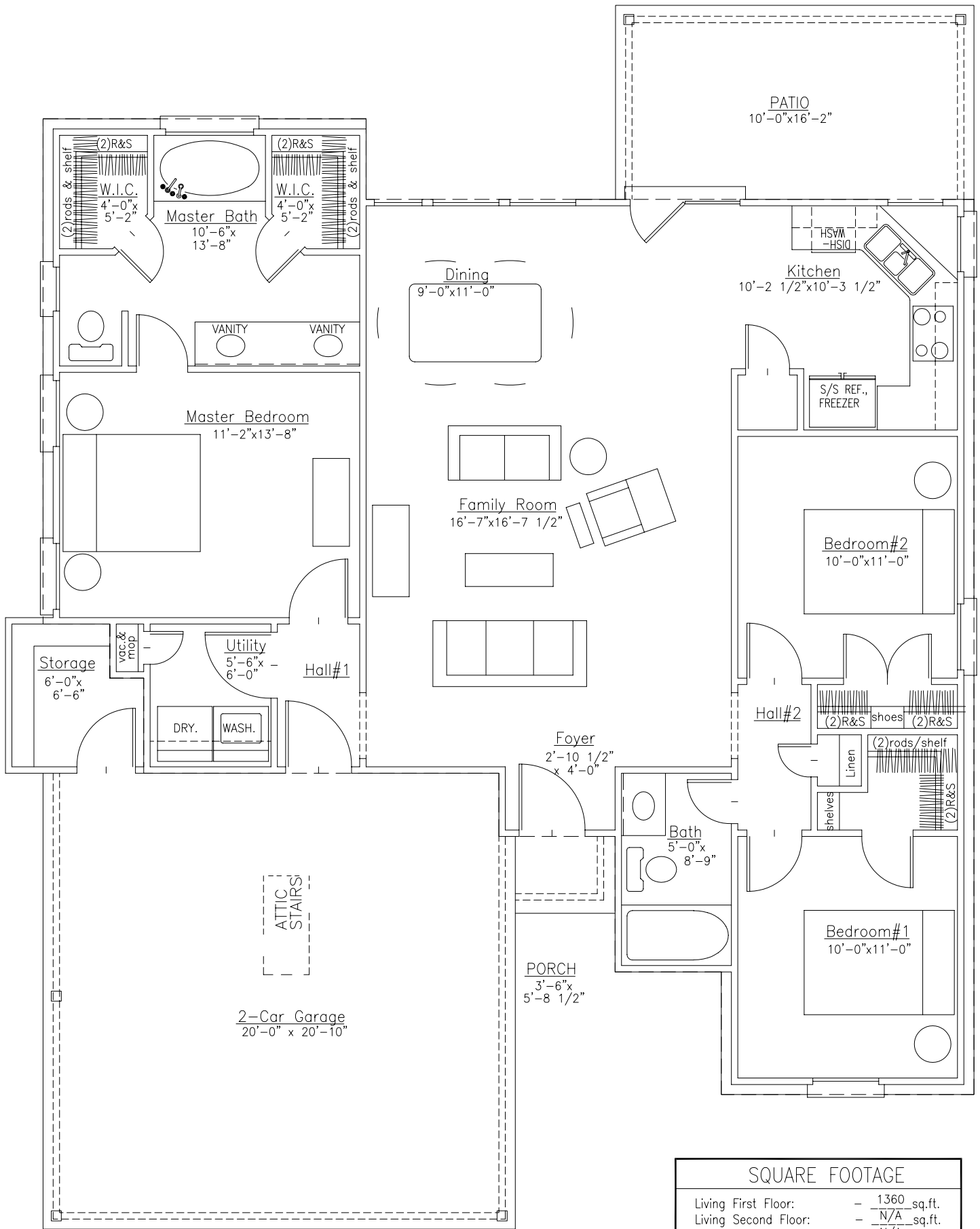


3" x 12" x 30"
cedar bd.
pot ledge

12
10



SQUARE FOOTAGE	
Living First Floor:	- 1360 sq.ft.
Living Second Floor:	- N/A sq.ft.
Total Living:	- N/A sq.ft.
NON-LIVING: (GARAGE, PORCHES, etc.)	
TOTAL NON - LIVING:	_____ sq.ft.
TOTAL SQUARE FOOTAGE:	_____ sq.ft.